

# ESPS SDP Overview 2024-25

2024 - 2025

1

## Teaching & Learning, Assessment:



1. Staff will implement memory strategies into T&L to help pupils improve, 'gain and retain', and 'think and link' with the aim of improving attainment
2. Pupils will help plan their own learning through effective use of Success Criteria each week and through pupil target setting
3. Pupils will be trained in the Question Formulation Technique to help with engagement and attainment
4. Pupils will continue to use thinking strategies for MM & spellings etc. – linked to metacognition etc.
5. Home learning will be changed to try and help impact on pupil attainment
6. New monthly staff HUBs will support whole school self-evaluation

### 2025/26 and beyond...

Numeracy training in breadth of T&L  
Memory training developed

2024 - 2025

2

## Curriculum, Planning, Digital Skills:



1. Staff will further develop medium term planning to help support improvements in Digital learning experiences, standards and attainment
2. Pupils will have opportunity to use new tech - Microbits/ Spheros/ other, to help enhance Digital Skills and learning experiences
3. The school will achieve the Digital Skills Award
4. Move towards being a 1 platform digital only school
5. The Arts planning will be audited and altered to ensure consistency and progression following the NI Curriculum
6. Nursery Staff training to improve Early Years Nursery provision

### 2025/26 and beyond...

The Arts medium Term planning developed  
Digital skills developed – gamification/digital badges

2024 - 2025

3

## Leadership, Staff PD:



1. Leaders will train in their self-evaluation and organisation to support raising standards and attainment in literacy and numeracy
2. A whole school/community approach to improving attendance through new strategies/incentives to help ensure improvement in standards and attainment
3. Staff will receive training in SEND and in line with SDP
4. Staff will have further opportunity to observe and share good practice
5. Leadership Clusters in East Belfast will restart
6. Staff will visit best practice as required
7. Nursery Leadership training to develop provision in Early Years Nursery

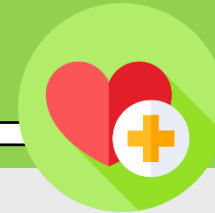
### 2025/26 and beyond...

More local schools invited to share in the good practice of ESPS  
Outside leadership training

2024 - 2025

4

## Health, Wellbeing, Keeping Safe, Environment, Society



1. New Counselling service will commence to help with pupil wellbeing
2. Forest School staff (and parent volunteers) develop school mobile forest to help with pupil and community wellbeing
3. Introduction of pupil books to support wellbeing and self-evaluation
4. Whole school wellbeing development as part of beingwelldoingwell (EANI)
5. Helping Hands (Women's Aid) will be implemented to support pupils in trauma
6. Parent Focus Groups and drop-in used to promote wellbeing and learning
7. New monthly staff HUBs will support pupil wellbeing
8. Improve pupil attendance supported through strategic support program

### 2025/26 and beyond...

BeingWellDoingWell wellbeing training  
Improve social connection

2024 - 2025

5

## Community, Equity/Equality, Inclusion Collaboration,



1. Parents will participate in learning workshops linked to the SDP to help support improvements in pupil literacy and numeracy attainment
2. Staff will develop Home learning grids for parents to help more engagement and pupil attainment – link to memory strategies
3. More curriculum information on Seesaw and website
4. Improvements in induction for newcomer families including newcomer Parent focus Group (NPFPG)
5. Implement new Instagram parent support HUB Page to support pupil attendance, wellbeing and learning

### 2025/26 and beyond...

Digital Home Learning developed  
Shared Education  
Social Connection policy